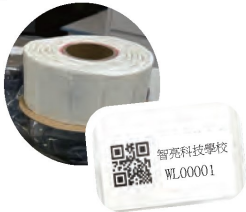




Our RFID Library Equipment

1



UHF RFID Tags (Suitable for Library Books)

Size: 54w×34h mm
Reading Distance: 600cm
Read/Write Times: >100,000
Supports: EPC or ASCII Code
Material: Coated Paper + Sticker
Purpose: Attach to books

6



RFID Slim Reader (White)

Dimensions: 155mm × 180mm × 9.5mm
Weight: Approx. 500g
Reading Distance: Up to 30cm
Connection: USB Plug and Play
Purpose: Workstation books borrowing and returning, reading the numbers inside RFID tags

2



RFID Handheld Scanner (Long Range)

Size: 164.2mm(L)×80mm(W)×24.3mm(H)
Display: 5.2" IPS LTPS 1920×1080
Weight: Approx. 654g
Reading Distance: 0 to >15m (based on RFID tag)
Connectivity: WiFi
Purpose: Stock taking, Books Tracking, Books Returning, changing status or location

7



RFID Mini Slim Reader (Black)

Dimensions: 510mm (L)× 600mm(W) × 905mm (H)
Reading Distance: Up to 10cm
Connection: USB Plug and Play
Purpose: Workstation books borrowing and returning, reading the numbers inside RFID tags

3



RFID Handheld Scanner (Short Range)

Dimensions: 160mm(L)×76mm(W)×15.5mm(H)
Display: 5.5-inch high definition full display (18:9), IPS 1440 x 720
Weight: Approx. 287g / 10.12 oz
Reading Distance: 0 to >0.5m (based on RFID tag)
Connectivity: WiFi
Purpose: Borrowing and returning books, changing status or location

8



RFID Ceiling-Mounted Security Gate

Model: Ceiling-Mounted for UHF Security Gate
Configuration: One entrance/exit with 2 antennas
Connection: WiFi or LAN
Purpose: Reminding users that books have not been checked out
Note: Requires minor installment work

4



RFID Self Check Kiosk (With Printer)

Dimensions: 300mm×250mm×590mm
Display: 15.6" 1080×1920 Multi-Touch Display
Configuration: WiFi, LAN, USB Plug, 1D/2D Scanner
Purpose: Self-check borrowing and returning books

9



RFID Book Return Box

Dimensions: 550mm (L) × 600mm (W) × 905mm (H)
Configuration: RFID reader, RFID controller, CEO App
Connectivity: WiFi or LAN (suitable for various locations)
Color: Standard gray (Customizable)
Purpose: For returning books

5



RFID Self-Check Kiosk (Without Printer)

Dimensions: 523mm × 400mm × 543mm
Display: 21.5" Multi-Touch Display
Configuration: WiFi, LAN, USB Plug, 1D/2D Scanner
Purpose: Self-check borrowing and returning books

10



RFID Book Shelf

Dimensions: 1589 × 879 × 420mm
Capacity: 200 to 400 books
Weight: 150kg
Configuration: Antenna, student ID card reader, UV disinfection lamp, controller, CEO App
Connectivity: WiFi or LAN
Purpose: Self-check books borrowing and returning